

Single Cylinder Engine Parts



Chevy Points Brackets for Kohler
 Make points and timing adjustments easily with this Chevy points conversion bracket. Unit replaces points bracket on 8hp through 16hp Kohler engines enabling you to use Chevy Points. Made from high strength corrosion resistant aluminum. 32oz Accel points recommended.

Prt No. PT **\$17.65**



Points Cover for Chevy Points Bracket
 This points cover fits our Chevy Points bracket. Available in Black, Yellow and Red. You are able to adjust points without removing the cover. Approved by NQS . NQS Document #050805

Prt No. PTC **\$6.65**



Accel Points 32 oz. for Chevy Points Bracket. High tension spring prevents points float. Includes Accel High Performance Condenser.

Prt No. Points **\$46.75**



1.5" Liquid filled Fuel Pressure Gauge
 0 to 15 lbs. Midwest Super Cub brand.

Prt No. FPG **\$18.90**



CenPeCo Gard-N-Go Oil
 This oil is specially blended for the air-cooled single cylinder engines and also is an excellent oil for V-twin engines.. This oil will help protect the lifters and camshaft in the V-twin engines. Available in 20wt or 30wt.

Prt No. Cenpeco **\$5.90/ quart**
\$70.35/ case

Shipping is \$22.00 on the case

Single Cylinder Engine Parts

COMBO DEALS

*No cash discount on combo deals. **These combos are not balanced.** Balancing available for \$125+heavy metal*

Steel Crank (Forged), Rod, and Piston Combo	\$630.00
Billet Ceank, Rod, and Piston Combo	\$735.00
Stock Altered Block, Crank Combon (Forged)	\$1120.00
<i>For Billet Crank, add \$100.00</i>	



Forged Steel Crankshafts
 Available in these sizes 3.250" (stock stroke) 4340 forged steel crankshaft large radius journals. **Prt No. C3250 \$418.95**
\$525.00
 Billet Super Duty Available **Prt No.**
 10hp [2.875"], 3.750", 3.875", 3.937", **B + Crank Size**
 3.965", 4.000" for super duty only.

~~Our cranks do not have timing marks to be used with adj. cam gear (Page 24)~~



Billet Aluminum Connecting Rods
 from Midwest Super Cub. These connecting rods feature a bearing lock to prevent rod bearing movement. Rod includes dipper. Comes in the following lengths:
 5.300" Stock Length 10HP Stock Length Rod **\$147.00**
 5.750" 5.812" 5.875"
 5.906" 5.937" 5.968"
 6.000" 6.031" 6.125"
 6.187" 6.250" 6.145" .669" pin hole



Rod Length Chart on Page 66 (for 10hp with 3.270 or 3.300 piston)

Rod Bearings for Rod (not picutred) Comes with bearing lock **Prt No. \$16.80**
 hole already drilled. Available in Std., .010, .020, .030 **Rod Brg**



Stock Altered Block **Prt No. SA1 \$803.25**
 This block replicates the K-341 Kohler block. Features include increased deck strength, more rigid main bearing areas and ductile iron material. Weight 61 lbs.

JE Pistons:

Size	Pin Height	Rings (for 10 hp engine use 6.145" 0.669" rod)	Prt #	JE +size+pin height	Price
3.270"	1.040"	1.0/1.2/2 mm		3.775"	\$182.70 each
3.300"	1.040"	1.2/1.5/3 mm		3.812	
3.405"	1.125"	.043/.043/3mm		3.937"	
3.420"	1.125"	.043/1/16/3mm		4.060"	
3.530"	1.125"	.043/1/16/3mm		4.125"	
3.775"	1.125"				

Pin Height-Rod Chart Page 66

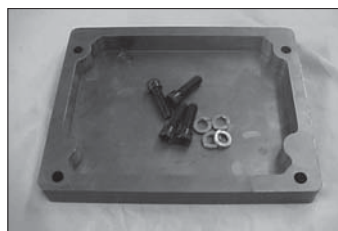
Single Cylinder Engine Parts



Crank Trigger Ignition

for Single Cylinder Engines. Kit includes magnet ring, bracket and module. Easy hook up. Buyer must specify diameter of PTO end of crank at the block. MWSC steel crank requires a 1.5" magnet ring. This crank trigger set up will allow you to use our Equus Tachometer on your 1 cylinder. This ignition module has been tested on our 1 cylinder engines for the past few years. Fits Kohler and MWSC aftermarker blocks. Must be used with 3 ohm coil. Bosch coil is 3 ohm found on bottom of this page.

Prt No. EI **\$94.50**



Replace your cast pan that leaks with Steel Oil Pans
1 Quart size (includes bolts & plug)

Prt No. OP1 **\$131.25**



Aluminum Front Engine Pulley
Plain front pulley with Hub (1", 1.125", or 1.250" shaft size. *Please* specify).
(MSC cranks take 1.250".)

Prt No. FPP **\$78.75**

Pulley Bushing sold seperately

Prt No. PB **\$11.50**



Billet Heavy Steel Pulley
Weighs 14 lbs. and has a 7 1/2" diameter

Prt No. FP-H **\$78.75**



Copper Head Gaskets
for 10-12-14-16

.031" thick

Prt No. HG 3112 (10-14 hp) **\$14.70**

Prt No. HG 3116 (16 hp) **\$14.70**

.062" thick

Prt No. HG 6212 (10-14 hp) **\$21.00**

Prt No. HG 6216 (16 hp) **\$21.00**



Bosch Super Blue Coil
High output Coil, Internal Resistor, 3 ohm coil.

Prt No. Coil **\$42.00**

Single Cylinder Engine Parts



Aluminum Bearing Closure Plate
(pictured)

Prt No. BCP **\$131.25**

Double Bearing Cup

Prt No. DBCP **\$49.65**

Front and rear available.



Bearings for Bearing Cup
(Front and rear bearings. Please specify.)

Prt No. Double
Bearing **\$15.75**



Copper Side Closure Plate Gasket
This gasket takes the place of the thick stock gasket. Re-usuable, never needs replacing. 0.031" thick.

Prt No. CPG **\$15.75**



12 Main Ball Bearing.
Top quality USA Made. Higher strength and less rolling resistance than stock.

Prt No. MB **\$50.40**



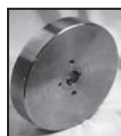
Large Steel Flywheels for
Ring Gear Starters
Weighs 19 lbs with ring gear comparable to stock flywheel weight.

Prt No. F19 **\$165.65**



Large Heavy Steel Flywheel for Stock and
Stock Altered
Weighs 25 lbs. Has step for your ring gear.
A little heavier than stock for more upperend power

Prt No. F25 **\$187.45**



8" Steel Flywheel
Weighs 20 lbs. Does NOT accept ring gear.

Prt No. F20 **\$148.85**



1 Cylinder Kohler Magnum Steel
Flywheel for Ring Gear
Does not include magnet, use one off of stock flywheel. Weighs 17 lbs.

Prt No. FM **\$199.50**



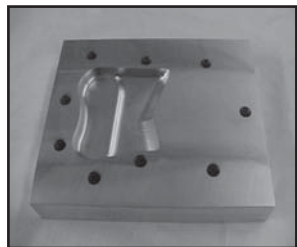
Replacement Starter Ring Gear
for K-Series Flywheel

Prt No. SRG **\$65.00**

Hardened Steel Dowel Pins for K-Series
Kohler Flywheels (not pictured)

\$0.55/ea.

Single Cylinder Engine Parts



Billet Aluminum Head with CNC combustion chamber. Head is machined for stock size valves with a .330" lift cam. Buyer must specify 10-12HP, 14HP or 16HP. Buyer must install their own spark plug hole. Labor to install spark plug hole \$10.00

Prt Nos.

CNC HEAD \$105.00
Please Specify Size



Steel Camshaft Blank
Fits MSC, Lakota, Nichols style cam pins.

Prt No. Cam Blank **\$68.25**

Manley Gen II Stainless Steel Valves - Fits Kohler 1cyl
Other Sizes Available 1.125"ss, 1.650" ti, 1.750"ss, 1.325"ss, 1.170"ss



Intake Valve 2.035"	Prt No. SS21	\$47.25
Exhaust Valve 1.625"	Prt No. SS1625	\$47.25
Intake Valve 1.380"	Prt No. SS138I	\$47.25
Exhaust Valve 1.380"	Prt No. SS138X	\$47.25
Titanium Valves:		
Intake Valve 2.035"	Prt No. TV21	\$99.75
Exhaust Valve 1.625"	Prt No. TV1625	\$99.75
Intake Valve 1.380"	Prt No. TV138I	\$99.75
Exhaust Valve 1.380"	Prt No. TV138X	\$99.75



Steel Adjustable Cam Gears
Fits Midwest, Lakota, Nichols, and Vogel steel camshafts.

Prt No. CG **\$52.50**

To dial your cam in accurately to get the best performance & power.

How to degree a cam for single cylinder DVD

Prt No. Degree a Cam 1 **\$20.00**

Single Cylinder Engine Parts



Dual Valve Spring

Reverse Wound, comes with aluminum retainers and steel valve locks. Use just the outer spring for cast iron cams and both springs for steel cams. Eliminates valve float.

Prt No. Spring

\$29.40/pr



Cam Pins, Front Points Plate with ball bearings for the PTO side of block and a needle bearing for fly-wheel side with attaching bolts.

Prt No. PPA

\$78.75



Large Base Lifter for camshaft lifts under .575". Fits 1 cylinder Kohler engines; 1.280" face diameter. Comes with large head adjusters.

Prt No. LBL

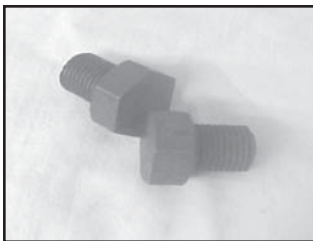
\$47.25



Super Large Base Kohler Lifters for camshafts over .570" lift. 1.500" diameter head. Super Finished. Adjusters sold separately.

Prt No. SLifter

\$47.25/ea.



Large Head Lifter Adjusters with 9/16" head diameter for offset valves. Much larger than the small stock adjusters. A must for many engines with relocated valve locations. Works just like a stock adjuster, no jamb nut to mess with.

Prt No. LHA

\$16.80/pr.



Port Support Plate for 1cyl Kohler Engines This is a 1/4" thick aluminum plate that bolts on the side of the Kohler engine to support the port on large port/large valve engines.

Prt No. PS

\$42.00

Single Cylinder Engine Parts



**Work Bench Motor/
Transmission Stand**
4-position rotation. Fully Adjustable
Arms and includes fixture for 1 cyl
Kohler engine. Holds up to 300 lbs.

Prt No. Holder **\$131.25**



Bronze Offset Valve Guides
for 1 cyl. Kohler Engines. Hard Bronze
offset guide moves valve .085" from
center line of existing hole. No machine
work necessary to install. Gain perfor-
mance by moving the valves closer to the
cylinder and closer together for a tighter
combustion chamber.

Prt No. Guide **\$21.00/ea.**



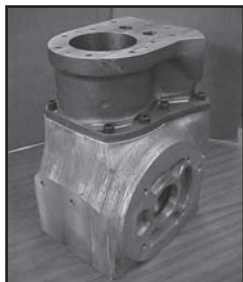
**Billet Aluminum Cam
Cover with Oil Fill**
Fits all K-Series Single Cylinder
Kohler engines.

Prt No. Cam Cover **\$56.70**



1 cyl Kohler Head Hold Down
Please specify if it's a 10-14 hp or a 16 hp
engine, stock closure plate or billet closure
plate.

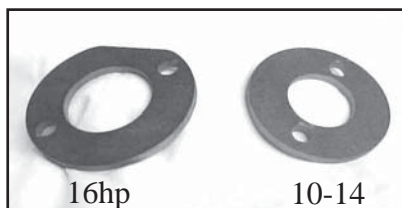
Prt No. HHD **\$47.25**



Woolam Blocks: These blocks
are available, we have the 50.5
tops in stock and the 30 cubic inch.

Prt No. MW Complete	\$1200.00
Prt No. MW30T	\$420.00
Prt No. MW50T	\$420.00
Prt No. WMB	\$840.00

Single Cylinder Engine Parts



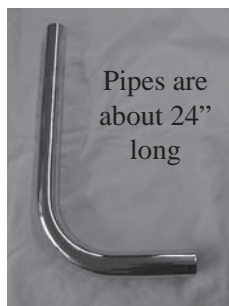
Economy Exhaust Flanges -
 For the do-it-yourself person
 For 10hp - 14hp and 16hp Kohler
 Engines. Bolts onto the engine and
 a pipe can be welded to the flange.
 EXF comes with copper gasket.

Prt No. EXF 12 - 10-14hp **\$10.50**
 Prt No. EXF 16 - 16hp **\$10.50**



Exhaust Flanges: with Bolts

10-14hp Kohler w/ copper gasket (<i>left</i>)	Prt No. XF12	\$35.00
16hp Kohler (<i>middle</i>)	Prt No. XF16	\$36.75
Aftermarket Blocks (<i>right</i>)	Prt No. XF34	\$31.50



Pipes are
 about 24"
 long

Chrome Exhaust Pipes
 1 3/8" ID, 1 5/8" ID and 1 3/4" ID.
 Mandrel bent chrome plated mild
 steel tubing.

Prt No. XP38 (10-14 HP) **\$52.50**
 Prt No. XP58 (16 HP)
 Prt No. XP34 (Aftermarket)

Plain Mandrel Bent Pipe

Prt No. Pipe38 (10-14 HP) **\$21.00**
 Prt No. Pipe58 (16 HP)
 Prt No. Pipe34 (Aftermarket)

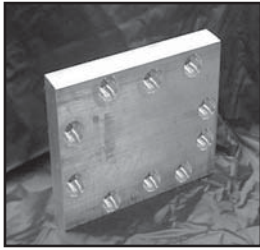


Exhaust Pipe Covers

*Various Colors: Red,
 Black, Yellow, JD Green,
 Blue, Purple, & Pink*

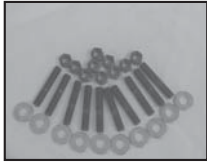
Prt No. XPC **\$10.50**

Single Cylinder Engine Parts



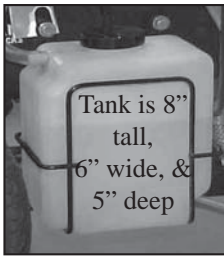
Billet Aluminum Head Blanks
for 10-12-14 and 16 hp Kohlers.
These heads come with the head
bolt pattern drilled and counter
bored. Virgin mill T-65 6061 heat
treated aluminum. Try your own
hand at creating the ultimate head.

Prt No. HB12 (10,12,14) **\$49.65**
Prt No. HB16 (16hp)



Head Stud Kit
Includes 10 studs, washer, nuts.
Torque to

Prt No. StudKit16 **\$28.35**



Fuel Tank
Plastic 2.5 quart fuel tank with
bottom 3/8" feed nipple and
a 5/16" nipple top return line.
Comes with wire mounting rack,
lid, and fuel line.

Prt No. PFT **\$26.25**



**Chrome Tappet Cover Plate
and Hardware**
Factory Kohler cover, chrome
plated to "dress up" your tractor.
Now comes with 2 gaskets.

Prt No. TC **\$30.45**



**NEW! Aluminum Tappet
Cover Plate with Gasket**

Prt No. TCA **\$10.50**



5" Model



3 1/2" Model

I EQUUS Tachometer
for V-twin engines or single using our
crank trigger ignition. Inductive hookup.
3 1/2" size is 0 to 8,000 RPM, 5" size
is 0 to 10,000 RPM with programmable
shift light and RPM recall for singles.

3 1/2" Prt No. **\$84.00/ea.**
Tachometer 3

5" Prt No. Ta- **\$141.75/ea.**
chometer 5